

CFM'S 2ND NORDIC CONFERENCE 29-30 AUGUST 2016
FACILITIES MANAGEMENT RESEARCH AND PRACTICE
DOES FM CONTRIBUTE TO HAPPINESS IN NORDIC COUNTRIES

Alternative Learning Environments by Alternative Retrofitting Processes

CORE results of the Nordic CARE Project

Suvi Nenonen, Tampere University of Technology, Finland

Robert Eriksson, Aalto University, Finland

Olli Niemi, University Properties of Finland & Tampere University of Technology

Antje Junghans, NTNU, Norway

Susanne Balslev Nielsen, Technical University of Denmark, Denmark

Göran Lindahl, Chalmers University of Technology, Sweden

The Nordic CARE-project 2014-2016:3

1. To identify the future needs and business potential of stakeholders for resource efficient campus management
2. To develop the framework for Nordic campus retrofit CARE-concept
3. To demonstrate the mutual CARE-concept in different Nordic campuses creating a scalable concept
4. To define retrofit guidelines as a part of campus area strategies



Co-Evaluating

University Properties of Finland Ltd.

Three retrofitting cases (from 40)

How to help universities to face new challenges



Hämeenlinna

Hämeenlinnan kaupunki: Seminaarin kampus

Jyväskylä

Jyväskylän yliopisto: Jyväskylän kampus

Kuopio

Itä-Suomen yliopisto: Kuopion kampus

Oulu

Oulun yliopisto: Kontinkankaan kampus

Oulun yliopisto: Linnanmaan kampus

Rovaniemi

Lapin yliopisto: Rovaniemen kampus

Tampere

Tampereen teknillinen yliopisto: Hervannan kampus

Tampereen yliopisto: Kaupin kampus

Tampereen yliopisto: Keskustan kampus

Vaasa

Vaasan yliopisto: Vaasan kampus

Åbo Akademi: Vaasan kampus
CARE Frame

Joensuu

Itä-Suomen yliopisto: Joensuun kampus

Kajaani

Kajaani: Kajaanin kampus

Lappeenranta

Lappeenrannan teknillinen yliopisto:
Lappeenrannan kampus

Rauma

Turun yliopisto: Rauman kampus

Savonlinna

Itä-Suomen yliopisto: Savonlinnan kampus

Turku

Turun yliopisto: Turun kampus

Åbo Akademi: Turun kampus



Core of UBIKO Training school in University of Oulu



Open flexible,
multiuse digital, social
and physical learning places

**Core
Regime**

Social

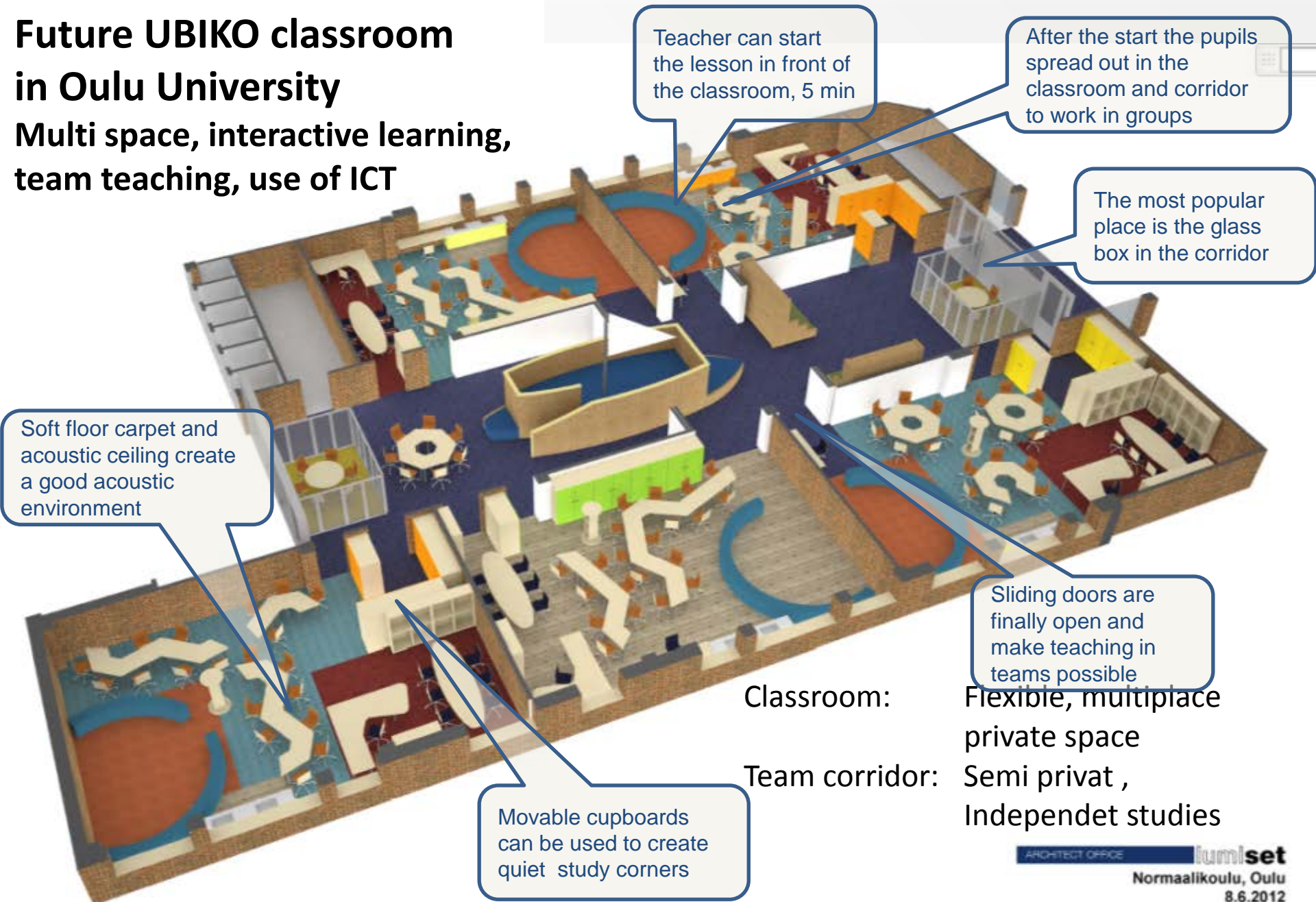
Co-creation

Case Ubiko

- Teacher Training School aims to promote self regulated learning of pupils and team teaching
- New ways of learning in more collaborative way: various learning needs and teamwork between teachers
- Co-creation with teachers, an architect joined after the teachers had defined the goals of the change which is achieved by retrofitting process

Future UBIKO classroom in Oulu University

Multi space, interactive learning,
team teaching, use of ICT



Teacher can start
the lesson in front of
the classroom, 5 min

After the start the pupils
spread out in the
classroom and corridor
to work in groups

The most popular
place is the glass
box in the corridor

Soft floor carpet and
acoustic ceiling create
a good acoustic
environment

Sliding doors are
finally open and
make teaching in
teams possible

Movable cupboards
can be used to create
quiet study corners

Classroom:

Team corridor:

Flexible, multiplace
private space
Semi privat ,
Independet studies

New inspiring, collaborative learning and team teaching is possible because of the new, flexible spaces



Pictures: Heikki Kontturi / OY, UBIKO

**After that the work continues in smaller study groups
If needed, the teacher can support**



Most popular place



**The corridor is an active
meeting place.
From movable “auditoriums”
it is easy to arrange even large
happenings**



The ship in the lobby is multifunctional



A place for wrestling and relaxing



It is a stage



or studying



**It's very common
to work on the floor**

Other perspectives of UBIKO

Systemic

- Niche: New learning area
- Landscape: New curriculum

Integration

- Digital: Tools and their use
- Physical: New space typology

Co-operation

- Co-financing: University, Stakeholders, University Properties of Finland
- Co-evaluating: Monitoring, learning outcomes, user behaviour observations

Core of OASIS in University of Tampere



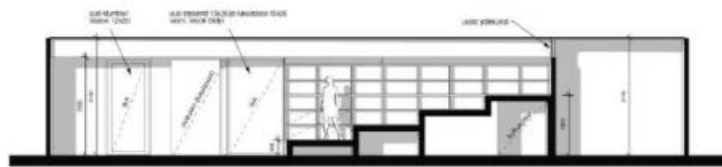
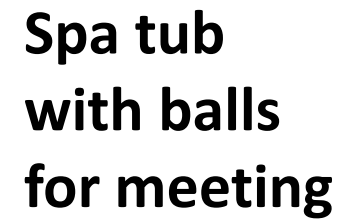
**Core
Regime**

Social

Co-creation

Case Oasis

- School of Information sciences aims to enhance learning by combining science and playing, via users' interaction, games and media
- Communal and experiential processes for learning and encouraging the opportunistic use of the space
- Ethnographic study and co-creation with students and staff – two years orientation and background investigation for design brief and co-design with architect



MurMurs: the talking, tweeting seats designed to make your office fun

CULTURE / 07 OCTOBER 13 / by LIAT CLARK



"I'm bored, no-one has sat on me for a while." This is what you'll see popping up in your Twitter feed if one of your MurMurs has been neglected for too long, Timo Nummenmaa tells Wired.co.uk. Nummenmaa is part of a research team at the University of Tampere's Games Research lab in Finland that is looking for new ways to capitalise on the hybridisation of toys and gaming -- as perfected



Angry seat
Laughing set,
Purr like a cat
You can tickle their ears,...

Other perspectives of OASIS

Systemic

- Niche: Living lab
- Landscape: Open access environment

Integration

- Digital: realized BYOD (bring your own device)
- Physical: multifunctional area

Co-operation

- Co-financing: University and University Properties of Finland
- Co-evaluating: user feedback, ethnographic studies, monitoring



Musica demo in University of Jyväskylä

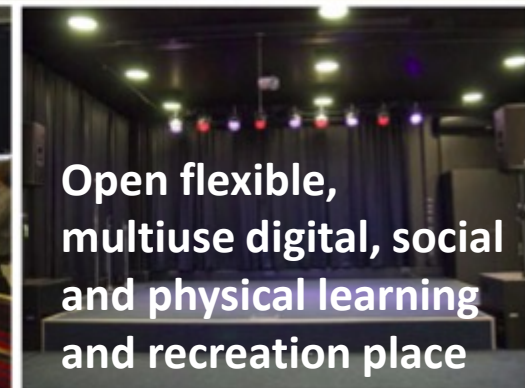
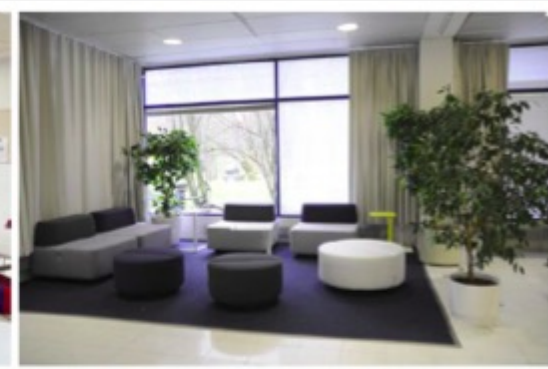
**Core
Regime**

Social

Co-creation

Case Musica

- Department of Music aim to increase informal learning by enhancing multidisciplinary, experience-rich and international interaction in vacant student restaurant
- Informal learning by providing a platform for pending time, performing, learning and organizing events
- **Co-creations with diverse users by using Charette-method**



**Open flexible,
multiuse digital, social
and physical learning
and recreation place**

The core of Musica was Co-creation by Charrette

Charrette is a multi-day, collaborative planning event for town planning in Northern America

	DAY 1	DAY 2	DAY 3	DAY 4	DAY 5	DAY 6	DAY 7
	Breakfast	Breakfast	Breakfast	Breakfast	Breakfast	Breakfast	Breakfast
8:00 AM			Team meeting	Team meeting	Team meeting	Team meeting	Team meeting
9:00	Studio set up	Team meeting					
10:00			Alt. conc. dev.	Preferred plan synthesis	Pref. plan synthesis	Prod.	Production
11:00	Tours	Alt. concepts development	Stakeholder reviews (tech.)		Stakeholder review	Stakeholder reviews as needed	
12:00							
	Lunch	Lunch	Lunch	Lunch	Lunch	Lunch	Lunch
1:00 PM							
2:00	Primary stakeholder meetings	Alternative concepts development	Alt. conc. dev.	Pref. plan synthesis	Plan development	Production	Production
3:00			Stakeholder reviews (tech.)	Stakeholder review			
4:00	Meeting preparation		Alt. concepts development		Optional open house		Meeting preparation
5:00							
	Dinner	Dinner	Dinner	Optional Open house		Dinner	Dinner
6:00							
7:00							
8:00	Public meeting #1	Alternative concepts development/ team review	Public meeting #2	Preferred plan synthesis/ plan development	Optional night off	Production	Final charrette public meeting
9:00							
10:00							
11:00							Celebration



PROJECT SCOPE

2013

Phase 1: Preparation

May-August

Phase 2: Collaborative Workshop
„1st Ideas Charrette“

22-26 August

Phase 3: Follow up work

September-October

Phase 4: Collaborative Workshop
„Design Charrette“

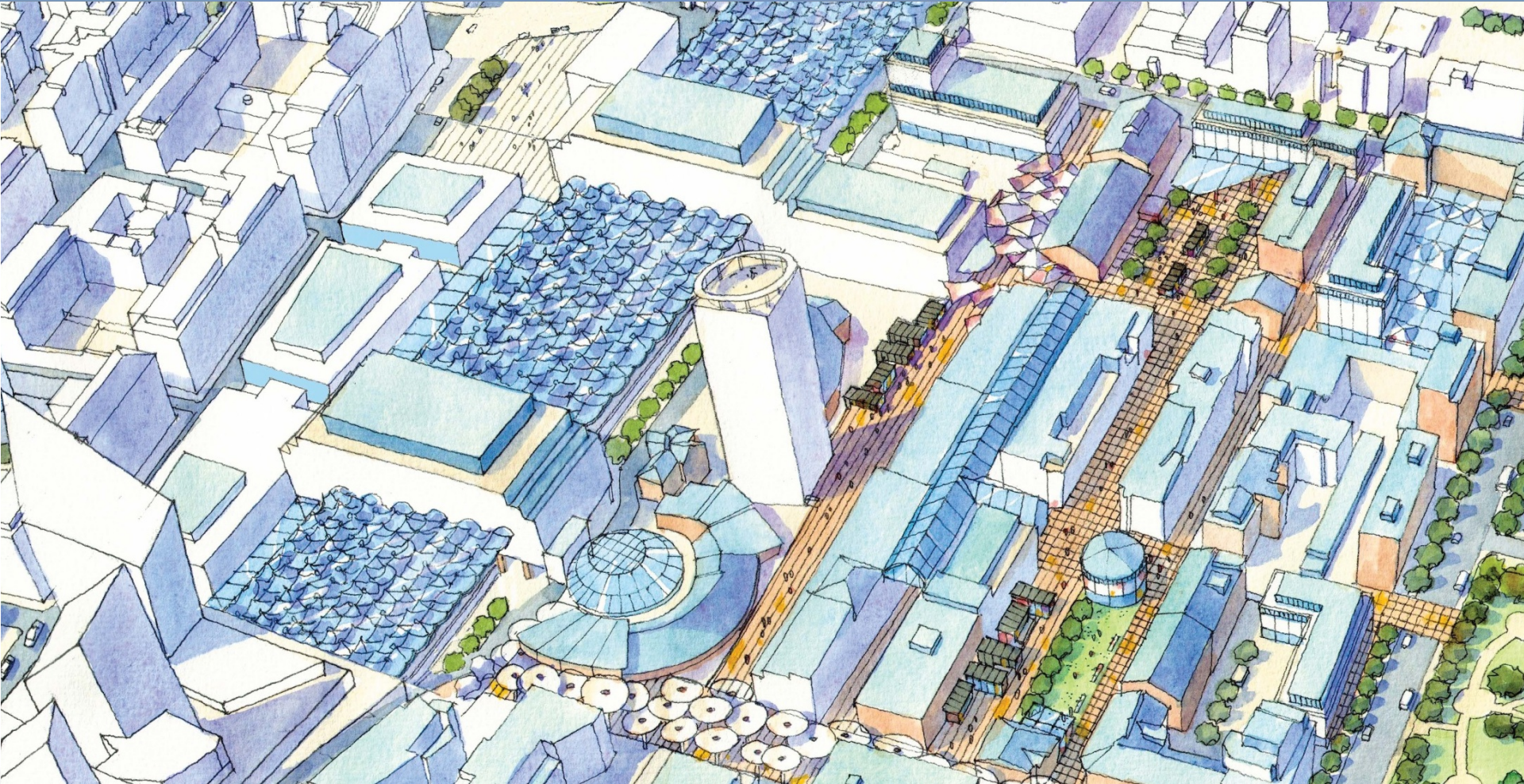
24-28 October

Phase 5: Illustrated Vision Report

November

VISION FOR TULLI+

A COLLABORATIVE CHARRETTE FOR TAMPERE CITY CENTRE



Charrette @ Musica

16 .12

19.12

Suunnittelu

27 - 29.1.2014

8:00

9:00

10:00

11:00

12:00

13:00

14:00

15:00

16:00

17:00

18:00

Tilavalmistelu

Tilavalmistelu

Ohjaustiimi:
tavoitteet.
+ Tilan
katselmointi

Lounas

**Visio ja
perusdata**
CoCreation1
Tilaideointi

Tiimikokous

Tiimikokous

CoCreation2 /
Suunnittelukilpailu
Käytön
konseptit

Lounas

Kons.
Kehitys
Tila
Proton
valmistelu
Lobby

Tulosten
arviointi

Tammikuu
2014:

Tulosten
perusteella
tehtävää
suunnittelua
tammikuun
työskentelyä
varten

Aamiainen

Tiimikokous

CoCreation3
Suuri
Suunnittelu

Lounas

Tilakonseptien
yhdistäminen ja
jatkokehitys.

Tulosten
katselmointi.

Aamiainen

Tiimikokous

Ohjaustiimi

Lounas

Open
House
rakennus

Asiantunt.-
arviointi
CoCreation4

OpenHouse
Input
Tilan
testaus.
Tilan käyttö

Päivällinen

Aamiainen

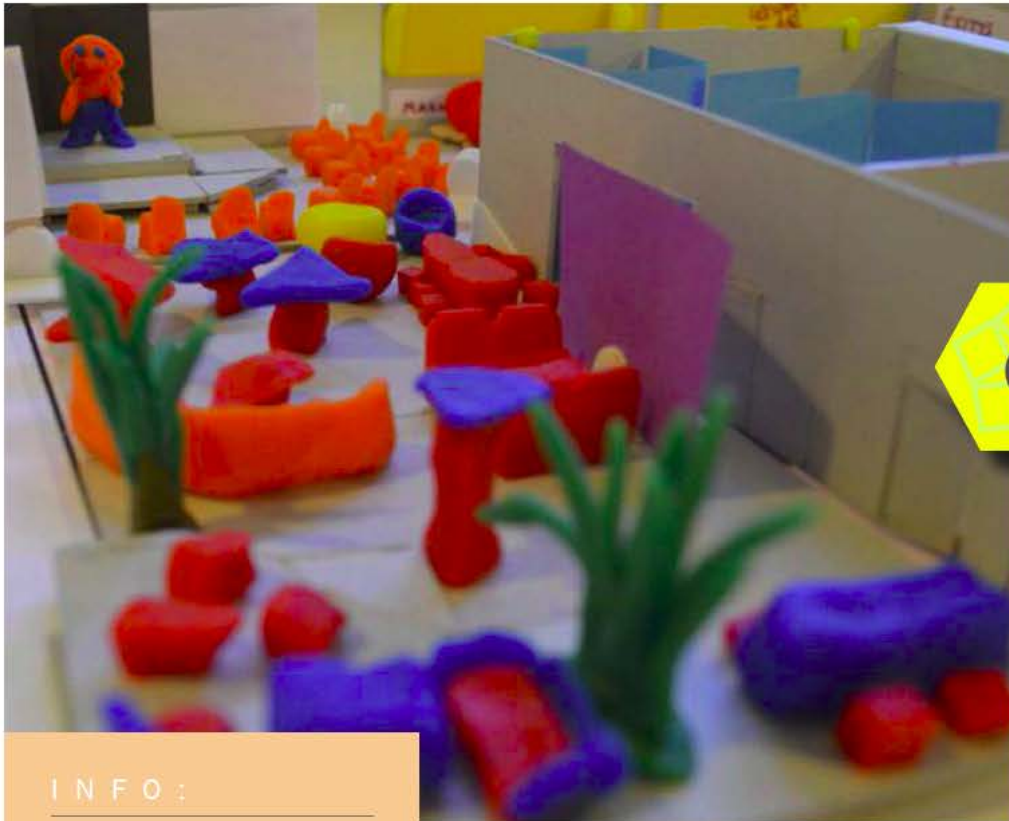
Tiimikokous

Päätökset ja
valinnat

Lounas

Confirmation
Raportointi
CoCreation5

Ohjaustiimi:
Arviointi



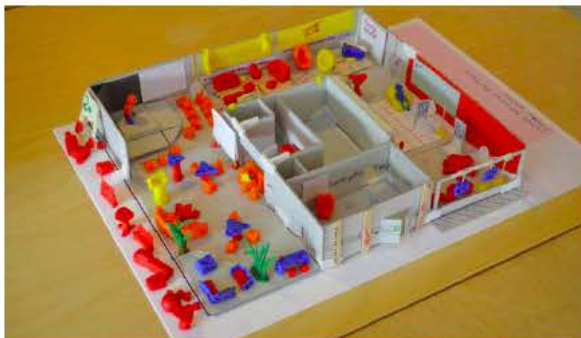
MUSICA

*Moottori: Päivi Fadjukoff
ja Anette Lundström*

Valmistumisvuosi: 2014

Kustannukset: SYK Oy 125
000 €, JY 125 000 €

Pinta-ala: 244 m²



And the users are more than happy:

- <https://www.youtube.com/watch?v=UVTLXe2h6RI&feature=youtu.be>
- <https://www.youtube.com/watch?v=yZnacyMid4o&list=PL8TVqwTcp1UFe4j73mPcJe7w15IFBCm1V&index=2>



Other perspectives of Musica

Systemic

- Niche: Music Hub – best at town
- Landscape: Local synergy

Integration

- Digital music production and performance
- Physical: active culture hub, meeting and learning place in campus

Co-operation

- Co-financing: University and University Properties of Finland
- Co-evaluating: User surveys, sensors

- CARE – CORE is about
 - **Social and collaborative** practices towards future learning environment.
- CARE CORE is the heart of retrofitting process. The CORE makes the other processes more alive.
 - Co-financing and co-evaluating
 - Integrating physical and digital solutions
 - Realizing the landscape initiatives as well as the weak signals from niches

Conclusions

- CARE-CORE lists and visualizes the intangible but essential perspectives when retrofitting places, processes and people's behavior.
- After collaborative retrofitting campus should give more value to their users.

Thank you!



If you are interested in getting our English publication, give us your card.